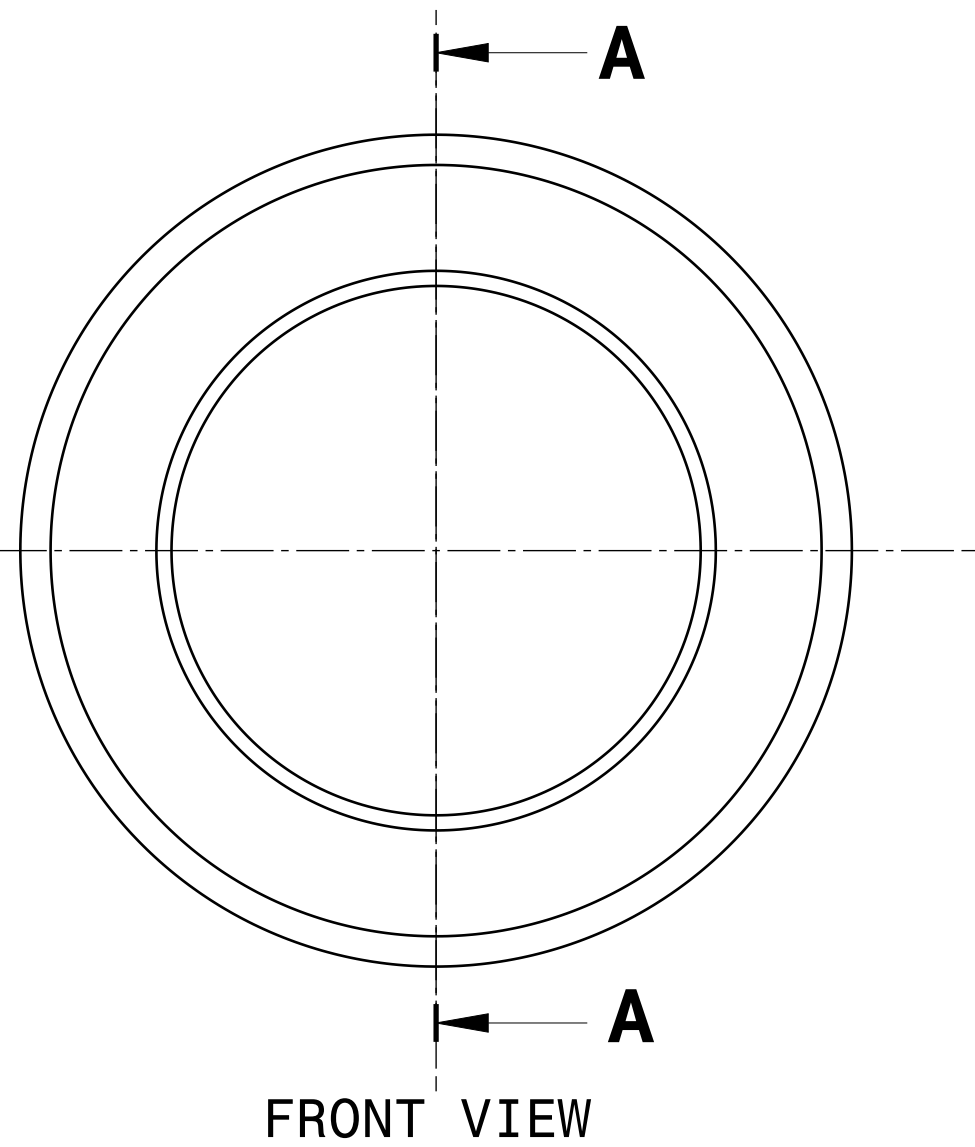
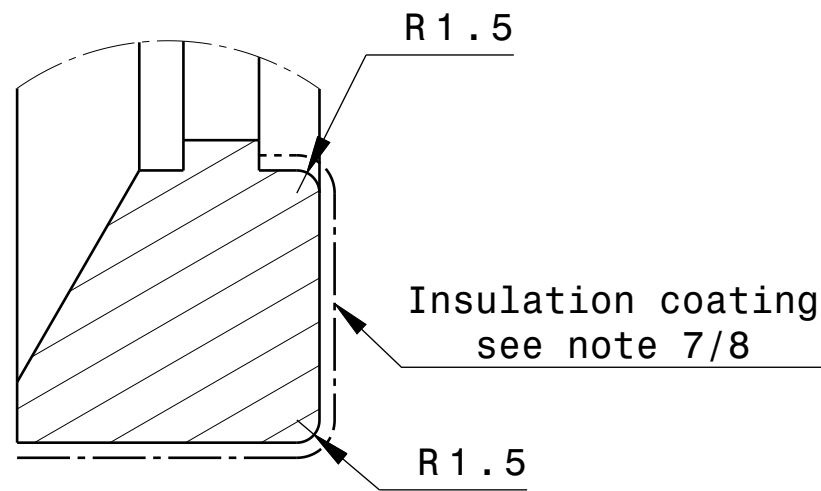




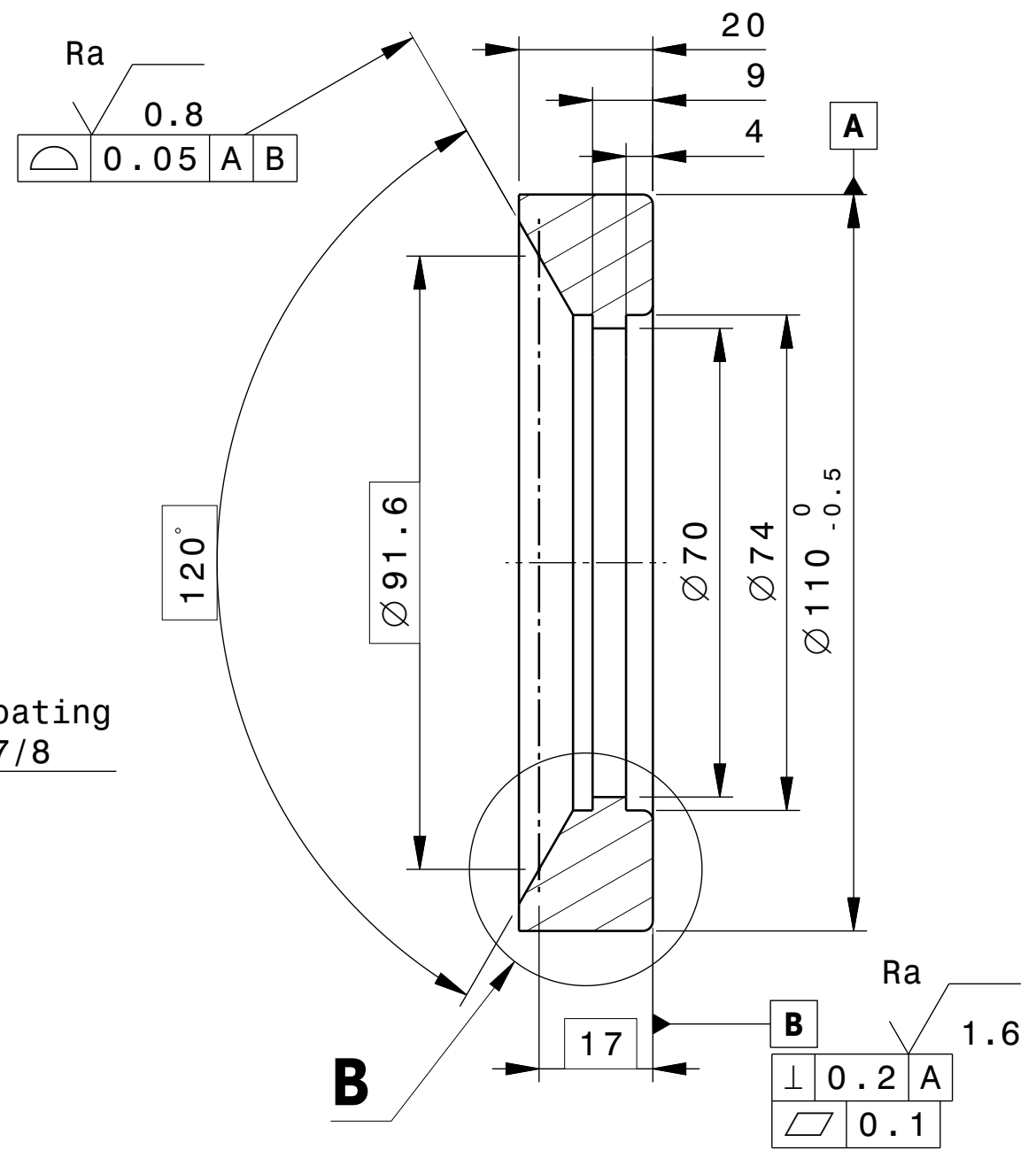
Spacereservation for the banner  
ID : 3PEQNB\_V2 MATURITY : FD STATUS : DA APPROVED BY : BANETTA S. DATE : 06 JUL 2021



FRONT VIEW



DETAIL B  
Scale: 2:1



SECTION VIEW A-A

- Note 1: General tolerances according to ISO 2768 cL unless specified.  
Note 2: Material 718\_IDM\_G7N74Y  
Note 3: All dimensions could be found in 3D CAD model as referenced in title block.  
Note 4: Component to be compliant with Annex B requirements.  
Note 5: All external surfaces roughness shall be maximum Ra 6.3 micrometre unless specified.  
Note 6: Break sharp edges.  
Note 7: Insulation coating as per\_IDM\_D25QF6  
Note 8: Dimensions & tolerances given after coating.

DRW CAD ID			3RNK2P		APPROVED BY		ITER Organization			LEGAL OWNER				
LINKED EV5 PT ID			T4FZKH		MEROLAM		INTERNAL USE  When received pursuant to a contract or agreement, the confidentiality clause therein shall be applicable. When received during tender phase treat as confidential.							
LINKED 3D ID			SJ5LDN		TECHNICAL REF									
PBS TITLE					GICQUES		DRAWING TITLE  BKT_CONICAL_WASHER							
Blanket System First Wall Panels .					DRAWN BY									
DATE OF ISSUE					PT MATURITY		PT VERSION		FW CENTRAL BOLT SYSTEM					
16Jul24					FD		- -B							
DR STATUS					SCALE		PT STATUS		DOCUMENT TYPE  Part Drawing					
A					1:1		-							
THIRD ANGLE PROJECTION					FORMAT		PBS NUMBER		DRAWING NUMBER			SHEET	N°OF SHEETS	REVISION
					A3		16 FW - -		055960			02	02	- - A